

SINGLE RADIO MOUNT

ONLY FITS
ERICSSON EQUIPMENT

THE SINGLE RADIO MOUNT

Is designed for installation of one Ericsson radio unit on vertical structures.

FLEXIBILITY

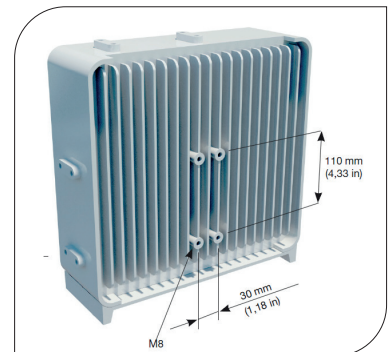
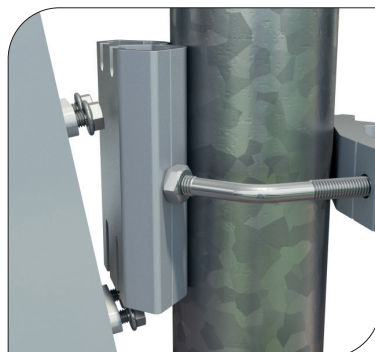
The Single Radio Mount fits all common units in Ericssons radio family and other units that have the hole pattern shown here below. Thanks to its design the Single Radio Mount can handle a wide range of all common frame leg designs, round, square, angle etc.

QUALITY

All components are made of anodized aluminium or acid proof stainless steel which gives the support excellent corrosion resistance.

EASY ASSEMBLY

Handling and installation is extremely easy thanks to its design with "hook on" attachments and also due to the light weight of material.



ORDER AND TECHNICAL INFORMATION

DRAWING NO: CD 991098

FUNCTION DESCRIPTION: Single Radio Mount for installation of one Ericsson RRU on vertical structures. Fits all common units in Ericssons radio family and other units that utilizes the same hole pattern.

MOUNTING SPAN

TUBES



SQUARE PROFILES



90° ANGLE



60° ANGLE



Minimum:

Ø25 mm (1,0 in)

35 x 35 mm (1,4 x 1,4 in)

35 x 35 mm (1,4 x 1,4 in)

40 mm opening (1,6 in opening)

Maximum:

Ø120 mm (4,7 in)

90 x 90 mm (3,5 x 3,5 in)

90 x 90 mm (3,5 x 3,5 in)

100 mm opening (4,0 in opening)

MECHANICAL DATA

Clamp profiles:

Aluminum, nature anodized 20µm

Fasteners:

Acid proof stainless steel

PACKAGE DIMENSIONS

LENGTH

180 mm (7,1 in)

WIDTH

100 mm (4,0 in)

HEIGHT

90 mm (3,6 in)

WEIGHT

1,1 kg (2,4 lb)

NOTE! 4 pcs of M8 bolts for one RRU is included in the Single Radio Mount.